

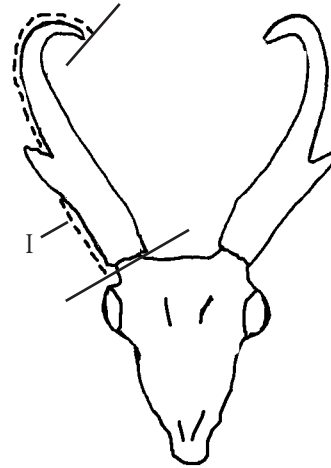
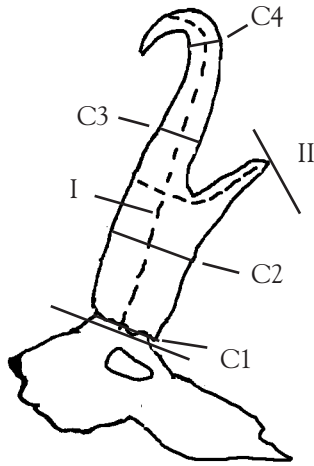


# Compton Traditional Bowhunters

Traditional Bowhunting Archives

## PRONGHORN ANTELOPE

Minimum Compton Points: 63 \*All Measurements to nearest 1/8"



Measurements

		Right Horn	Left Horn
I.	Length of Horn		
C-1	Circumference of Horn Base		
C-2	Circumference at First Quarter <b>BELOW</b> Prong (This measurement taken at _____ inches from the base)		
C-3	Circumference at Second Quarter <b>ABOVE</b> Prong (This measurement taken at _____ inches from the base)		
C-4	Circumference of Horn at Third Quarter (This measurement taken at _____ inches from the base)		
II.	Length of Prong		
III.	Sub Total		
IV.	Total Animal Score		
V.	Bow Used (Recurve +0 Points, Longbow +1 Point; Selfbow +2 Points)		
VI.	Arrow Used (Self-made Wood +1 Point)		
VII.	Stalking + 3 Points/ Ground Blind +1 Point/ Elevated Stand 0 Points		
VIII.	Unguided +1 Point		
IX.	Point Sub Total (Add Lines IV Through VII)		
<b>COMPTON POINT TOTAL</b> (Add Lines III and VIII)			

I certify that the above animal was measured in accordance with the Compton Traditional method and that the data are correct to the

best of my knowledge: \_\_\_\_\_ Signature: \_\_\_\_\_  
 (Print Name) (CTB Official Measurer)

Hunter's Name: \_\_\_\_\_ Date: \_\_\_\_\_